

COMPOSITE TECHNICAL PARTS GLASS / CARBON FIBER TUBES FOR TELESCOPIC MASTS

SOLUTION FOR GREAT-HEIGHT PRUNING

Compared advantages :

mechanical characteristics / lightness / electrical insulation
(high-voltage power lines proximity) / economical



Alti-Coup'

**ELIATIS
CHAPTRACK**



Located in the Isère region, the Eliatis company and Plasticon Composites France have developed a triple telescopic mast made of fiberglass / epoxide matrix. Thanks to its hydraulic engine, the mast spreads out over 23 m, which enables the activation of a 700-mm-in-diameter saw blade at its end.

Road-approved, this machine makes it possible to prune with complete safety, in forest areas, notably along high-voltage power lines (insulating characteristic of the composite mast). The « Alti-coup » system is a registered trademark sold around the world by the Eliatis company.



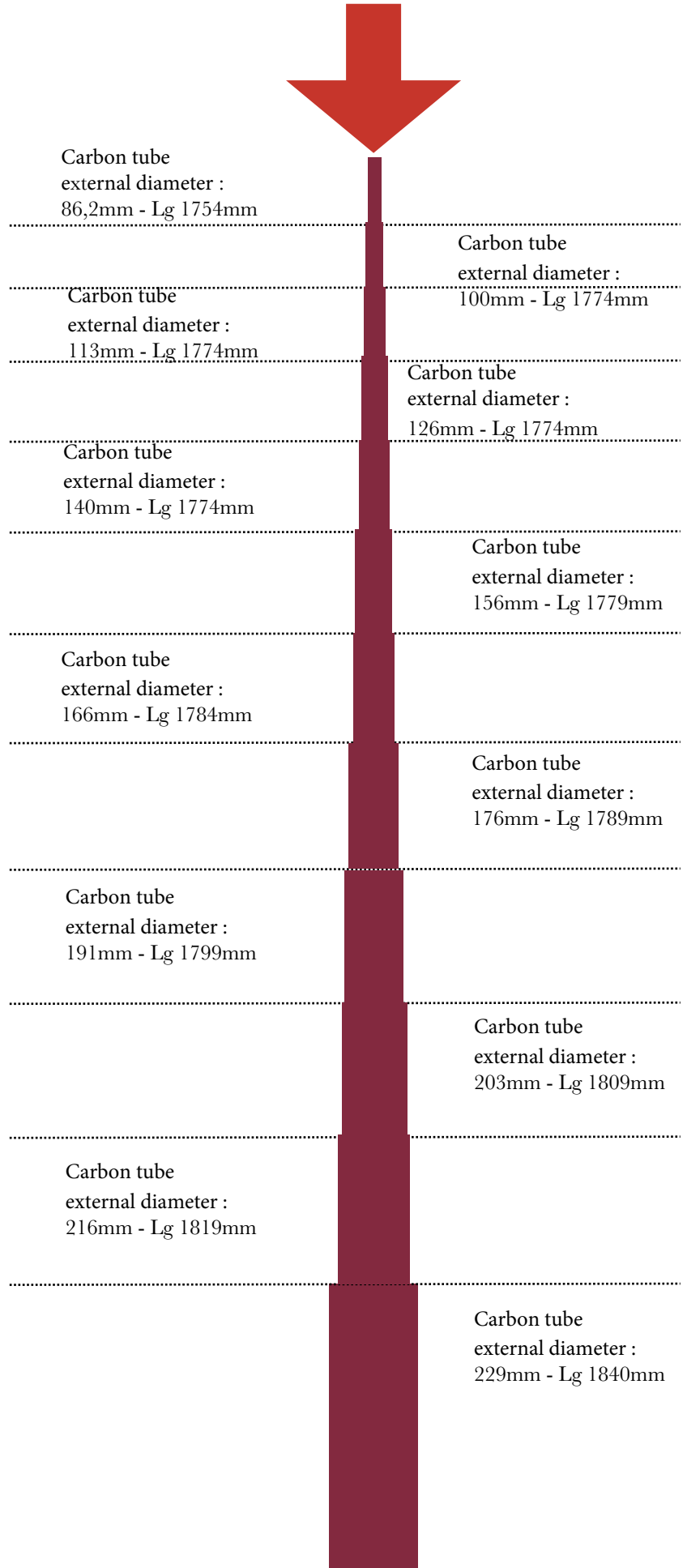
Glass / carbon fiber military tactical masts

maximum load ahead = 75 kgs

non-magnetic

economical

cost weight / mechanical characteristics ratio



Mast composed of 12 telescopic tubes of variable length and a 3-mm thickness, carbon-fiber-epoxy-resin made. The mast is locked in place by means of aluminium clamping clips.

Height when spread out = 18 000 mm
 Height when retracted = 2500 mm
 Locked in place by means of aluminium clamping clips
 The mast is shrouded on 3 levels by a total of 9 cables.

LIST OF OUR TOOLS

FOR EPOXY RESIN MANUFACTURING (Glass or carbon fiber)

Wide range of mandrels for a low economical launch price.

Minimum thickness

0,8 mm (standard) 0,3 mm (machined - on demand).

Thickness up to

150 mm with an external diameter limit ≤ 270 mm (size of our sterilizers)



Tools length = 3 operating meters

Ø int (mm)	Ø int (mm)	Ø int (mm)	Ø int (mm)	Ø int (mm)	Ø int (mm)
21,50	43,30	58,00	82,55	114,50	178,30
22,00	44,00	60,00	85,00	117,50	185,00
23,00	45,00	62,00	88,90	120,00	190,00
24,00	46,00	63,00	90,50	125,00	200,00
25,00	47,00	65,00	92,40	130,00	202,00
26,00	48,00	70,00	95,00	134,00	250,00
28,00	49,00	72,00	97,20	135,00	254,40
32,00	50,00	74,00	100,00	140,00	
34,00	50,90	75,00	101,60	142,00	
35,00	51,00	76,00	104,00	150,00	
36,00	54,00	76,20	105,00	150,70	
37,00	55,00	80,00	107,00	155,00	
40,00	57,00	81,00	110,00	160,00	

Tools length = 9 operating meters

Ø int (mm)					
202 - 8"	Specific tools (non-standard diameter) on demand.				
325					
450					

Dimensional tolerances, finishing and surface finishes

on external diameter...



Type-A finishing :

Natural surface with removed tear strip (rough surface)

Max. dimensional tolerance on external diameter :
+/-0,8 mm.



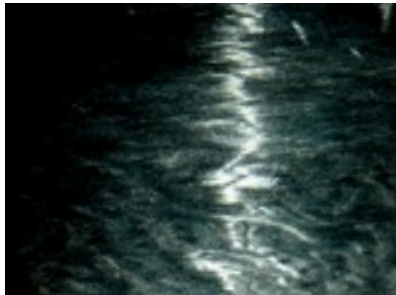
Type-B finishing :

Natural surface with external skin (smooth aspect).

Max. dimensional tolerance on external diameter :
+/-0,8 mm.

Colour : tinted black in the mass (= standard).

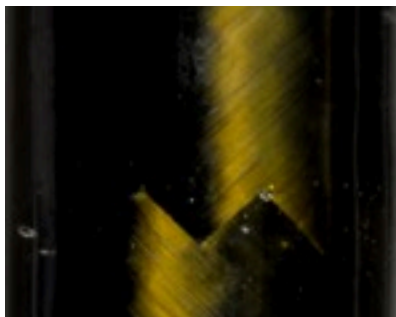
On demand : White, Green, Yellow, Red, etc.



Type-C finishing :

Surface after partial machining or sanding.

Max. dimensional tolerance on external diameter :
+/- 0,2 mm to +/- 0,5mm (*)



Type-D finishing :

Varnished surface (matt or shiny) after partial sanding.

Max. dimensional tolerance on external diameter :
+/- 0,2 mm to +/- 0,5mm (*)



(*) according to the selected diameters and the thickness of the part.



impact on the part's final price.

ORDER ONLINE ON : WWW.EPOXYRESOLUTIONS.COM

Dimensional tolerances, finishing and surface finishes on internal diameter...



Internal diameter tolerance

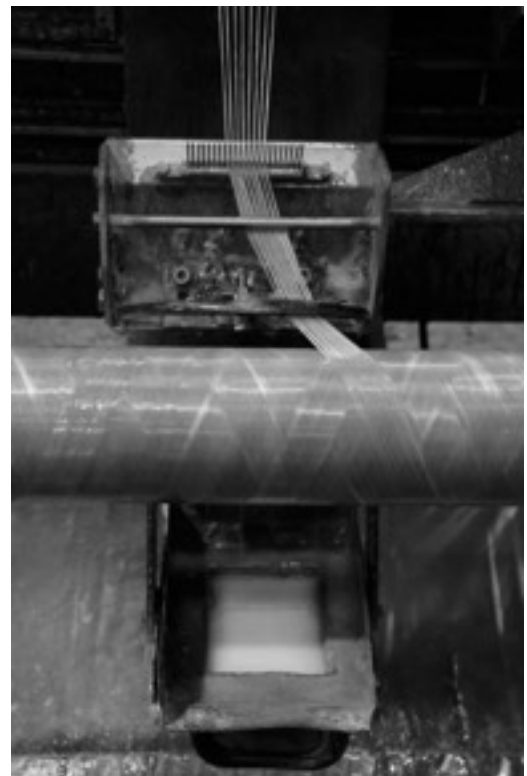
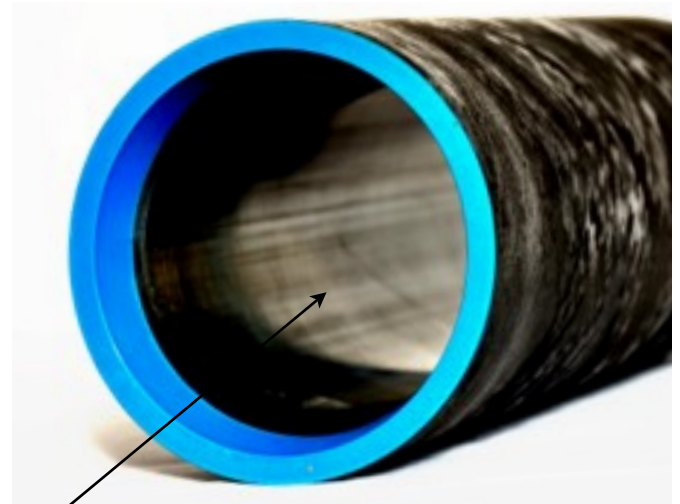
up to **H11**

Rectitude : 0,1mm/m

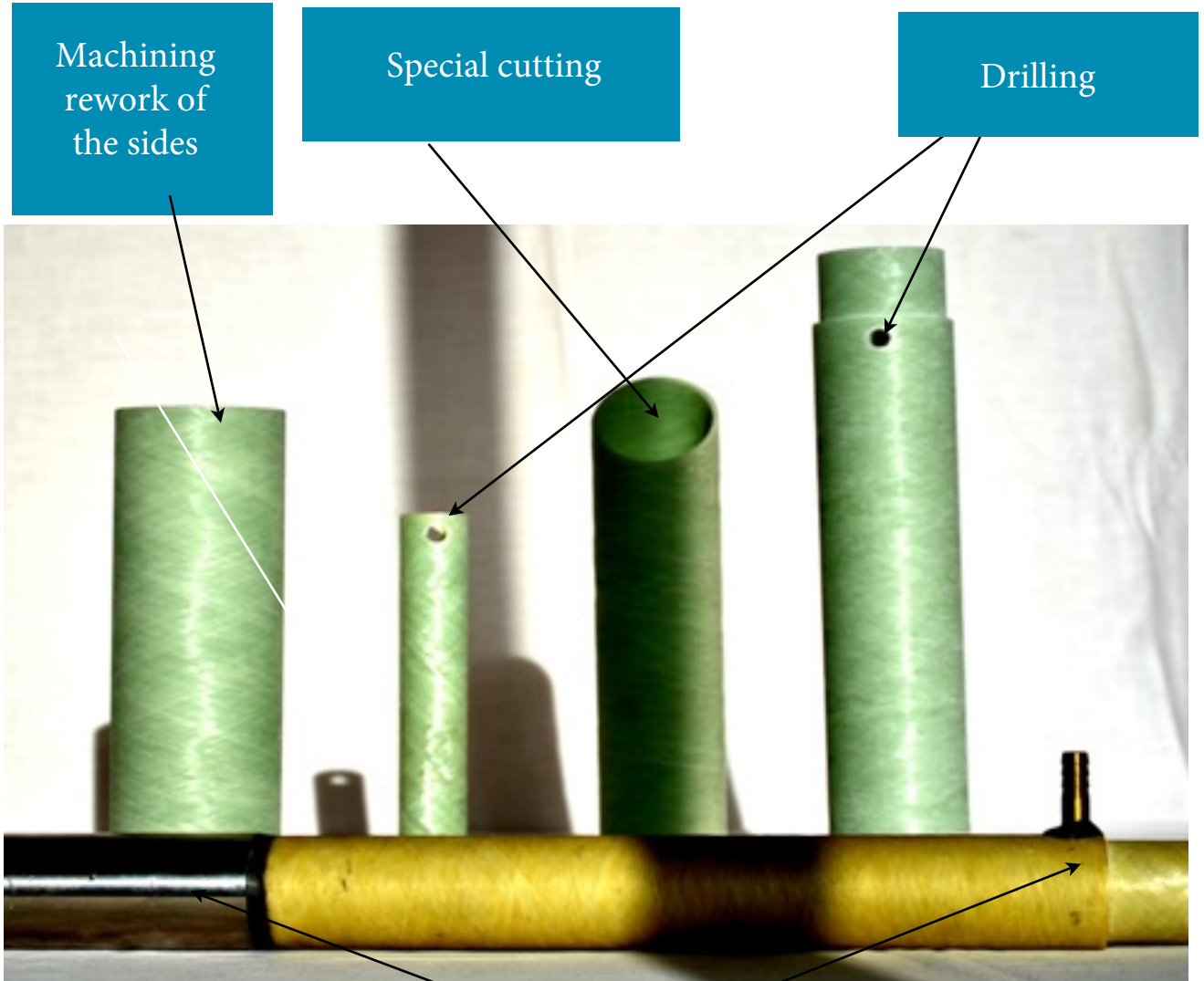
Ovalization : 0,05mm maxi.

Internal roughness : AR between 0,5 and 1,5 μm

Explanation : the fiber is wound-up around a mandrel whose surface finish is extremely smooth (some of our mandrels are chromed-adjusted), depending on the selected mandrel, the internal roughness of the tube makes it possible to seal directly on this surface.

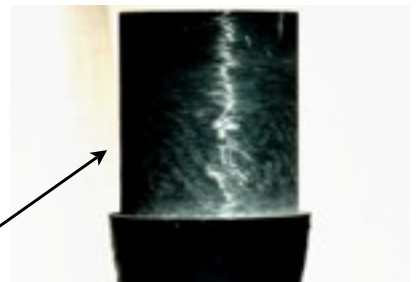


POSSIBLE COMPLETION OPERATIONS ON A COMPOSITE PART

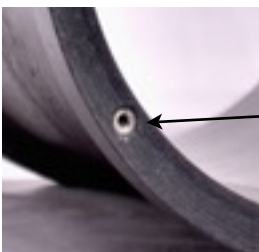


Machining of an internal groove and laying of a stainless-steel ring

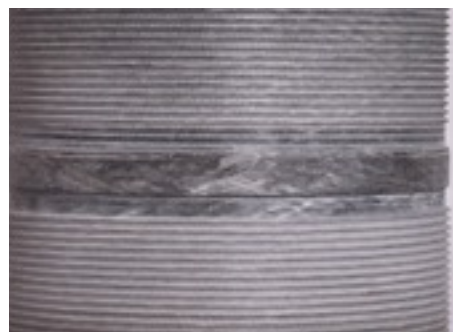
Bonding of an insert or other additional parts



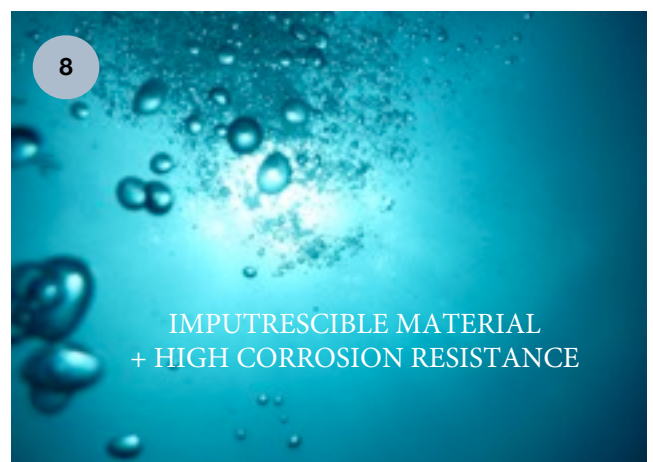
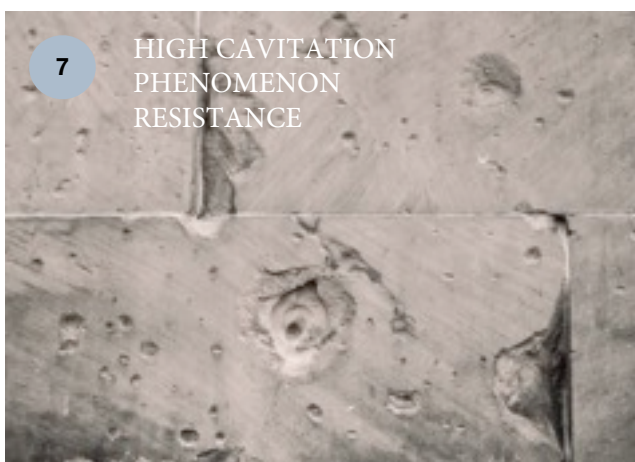
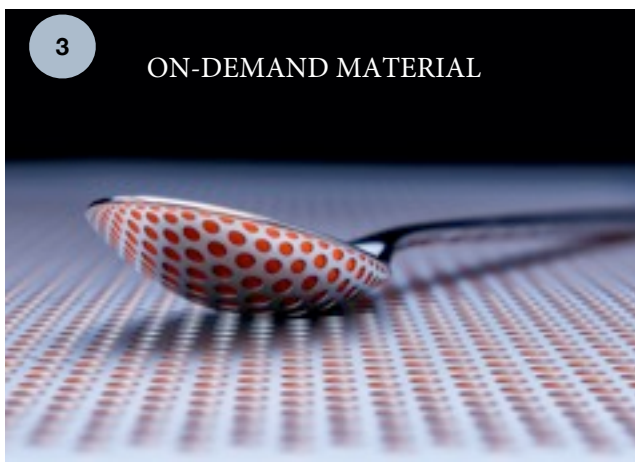
Specific machining



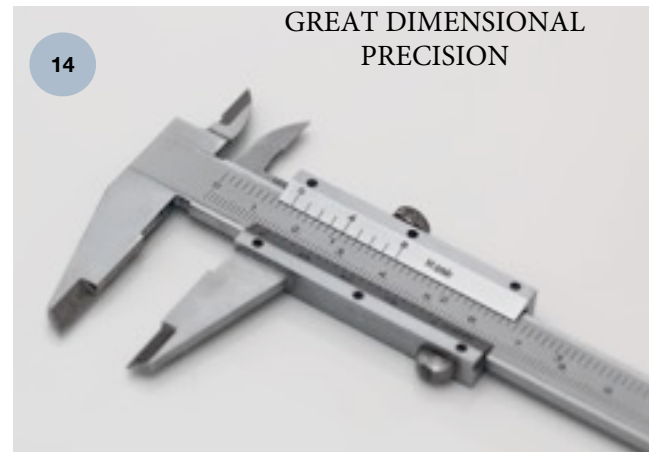
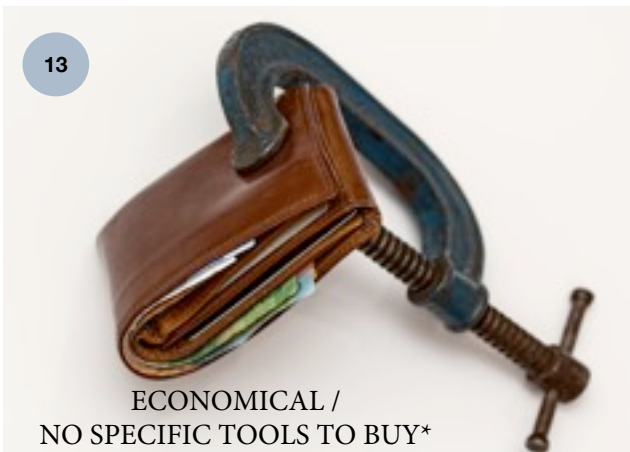
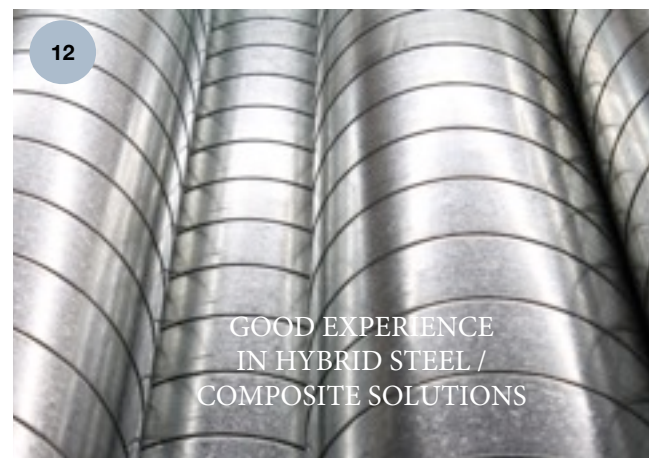
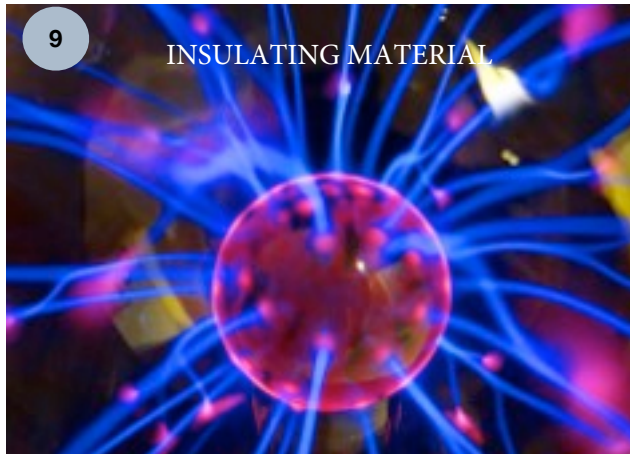
Laying of a helicoid



COMPARED BENEFITS OF OUR PARTS



COMPARED BENEFITS OF OUR PARTS





ORDER FROM OUR ONLINE SHOP :

WWW.EPOXYRESOLUTIONS.COM

SECURED PAYMENT



DELIVERY THROUGHOUT EUROPE



TECHNICAL AND COMMERCIAL
ASSISTANCE
from Monday to Friday
from 8.30 am to 6 pm.



< 48H

YOU CAN REACH US
AT THIS NUMBER :

+33 (0) 2 51 08 86 50

ASK FOR AUDREY

You can also send us an email at :

trade@plasticoncomposites.com

