

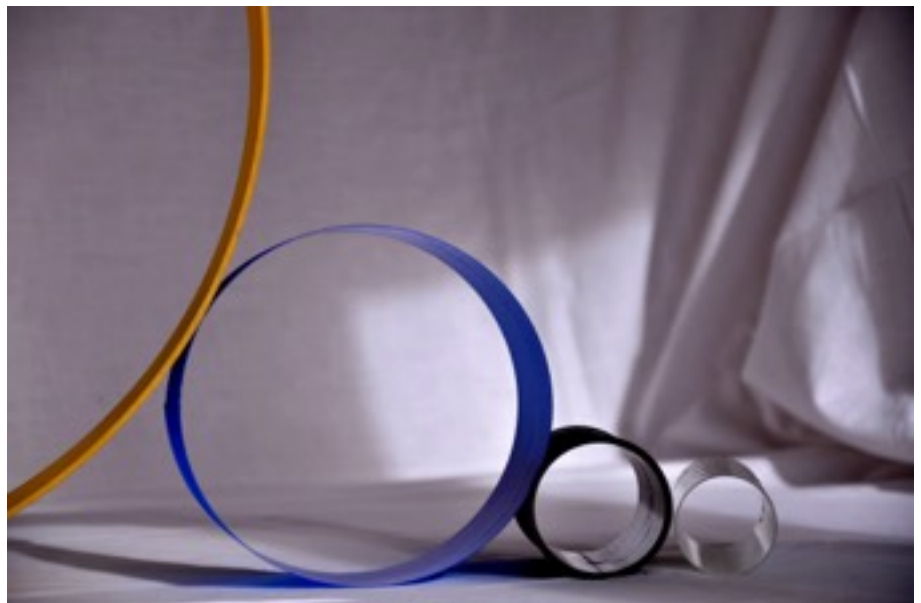
# COMPOSITE PARTS IN THE ELECTRICAL PROTECTION FIELD



COMPOSITE FUSE HOUSINGS

Here are the benefits of a composite solution in the electrical protection sector :

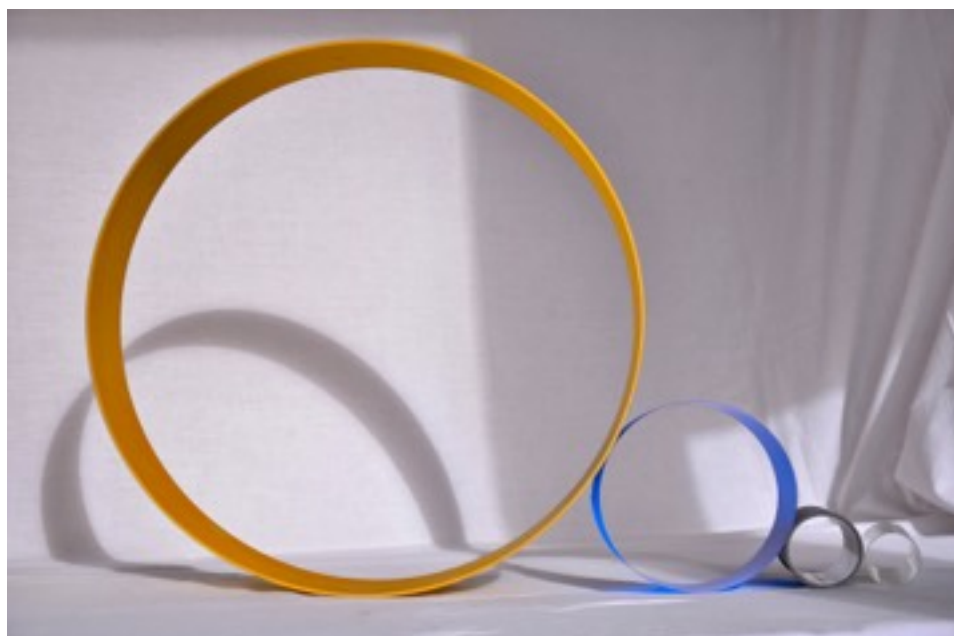
- Insulating ability
- Dimensional tolerances and surface aspect
- Anti-corrosion
- Good resistance to high temperatures ( $\leq 130\text{ }^{\circ}\text{C}$ )
- Lightness
- Non-magnetism



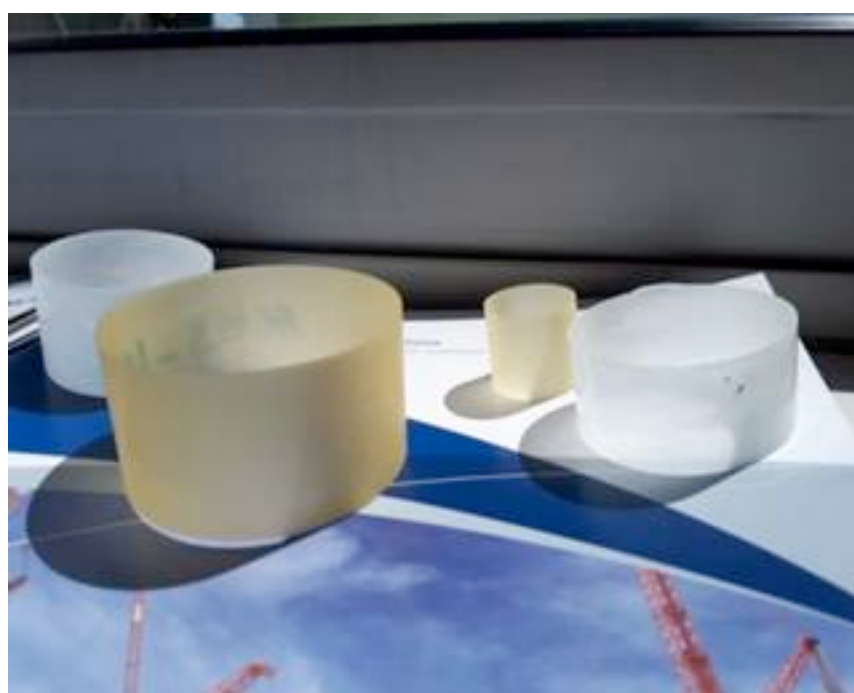
Over the last three decades, Plasticon Composites France has developed a unique savoir-faire in the sizing and the fabrication of high performance composite parts. We have carefully selected a high-quality epoxy resin in order to guarantee the sustainability of our technical parts (corrosion, high temperature, microorganism, corrosive agents... etc).

Our products develop in environments with demanding standards such as the water treatment field, the chemical, food-processing and electrical industries, boiler-feed water, cosmetic cleansing, bio-engineering, oil and gas.

Our engineering service is at your disposal to support you along the development project.



Guide rings, insulating.



Guide rings, insulating.

# LIST OF OUR TOOLS

## FOR EPOXY RESIN MANUFACTURING (Glass or carbon fiber)

*Wide range of mandrels for a low economical launch price.*

### Minimum thickness

0,8 mm (standard) 0,3 mm (machined - on demand).

### Thickness up to

150 mm with an external diameter limit  $\leq 270$ mm (size of our sterilizers)



### Tools length = 3 operating meters

Ø int (mm)	Ø int (mm)	Ø int (mm)	Ø int (mm)	Ø int (mm)	Ø int (mm)
21,50	43,30	58,00	82,55	114,50	178,30
22,00	44,00	60,00	85,00	117,50	185,00
23,00	45,00	62,00	88,90	120,00	190,00
24,00	46,00	63,00	90,50	125,00	200,00
25,00	47,00	65,00	92,40	130,00	202,00
26,00	48,00	70,00	95,00	134,00	250,00
28,00	49,00	72,00	97,20	135,00	254,40
32,00	50,00	74,00	100,00	140,00	
34,00	50,90	75,00	101,60	142,00	
35,00	51,00	76,00	104,00	150,00	
36,00	54,00	76,20	105,00	150,70	
37,00	55,00	80,00	107,00	155,00	
40,00	57,00	81,00	110,00	160,00	

### Tools length = 9 operating meters

Ø int (mm)					
202 - 8"	Specific tools (non-standard diameter) on demand.				
325					
450					

# Dimensional tolerances, finishing and surface finishes

*on external diameter...*



## Type-A finishing :

Natural surface with removed tear strip (rough surface)

Max. dimensional tolerance on external diameter :

**+/-0,8 mm.**



## Type-B finishing :

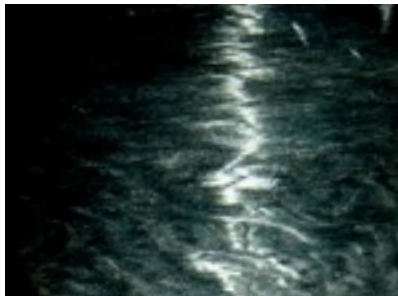
Natural surface with external skin (smooth aspect).

Max. dimensional tolerance on external diameter :

**+/-0,8 mm.**

Colour : tinted black in the mass (= standard).

On demand : White, Green, Yellow, Red, etc.

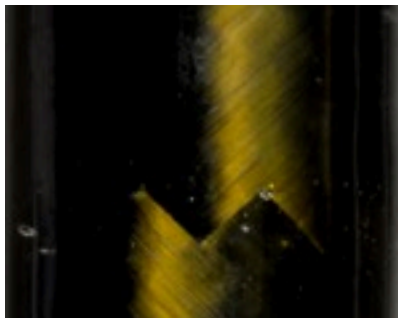


## Type-C finishing :

Surface after partial machining or sanding.

Max. dimensional tolerance on external diameter :

**+/- 0,2 mm to +/- 0,5mm (\*)**



## Type-D finishing :

Varnished surface (matt or shiny) after partial sanding.

Max. dimensional tolerance on external diameter :

**+/- 0,2 mm to +/- 0,5mm (\*)**



(\*) according to the selected diameters and the thickness of the part.



impact on the part's final price.

ORDER ONLINE ON : [WWW.EPOXYRESOLUTIONS.COM](http://WWW.EPOXYRESOLUTIONS.COM)



# Dimensional tolerances, finishing and surface finishes

*on internal diameter...*



## Internal diameter tolerance

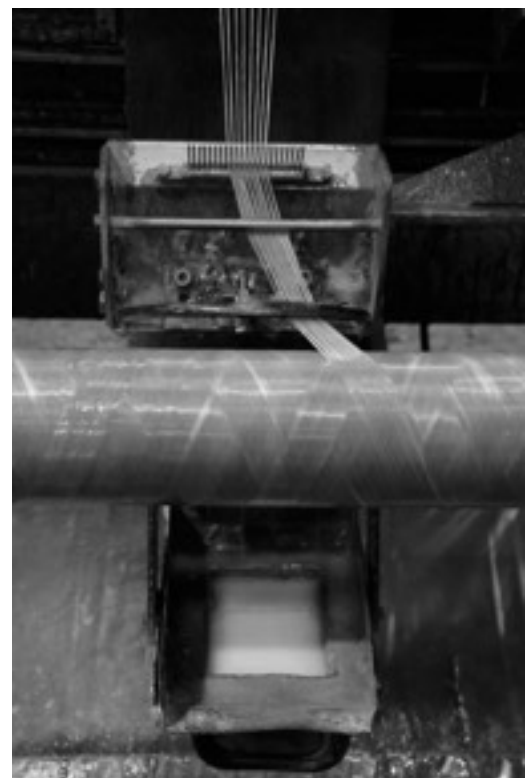
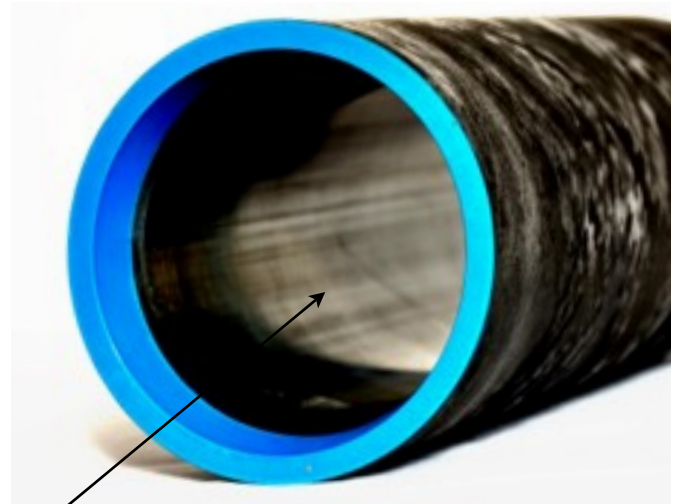
up to **H11**

Rectitude : 0,1mm/m

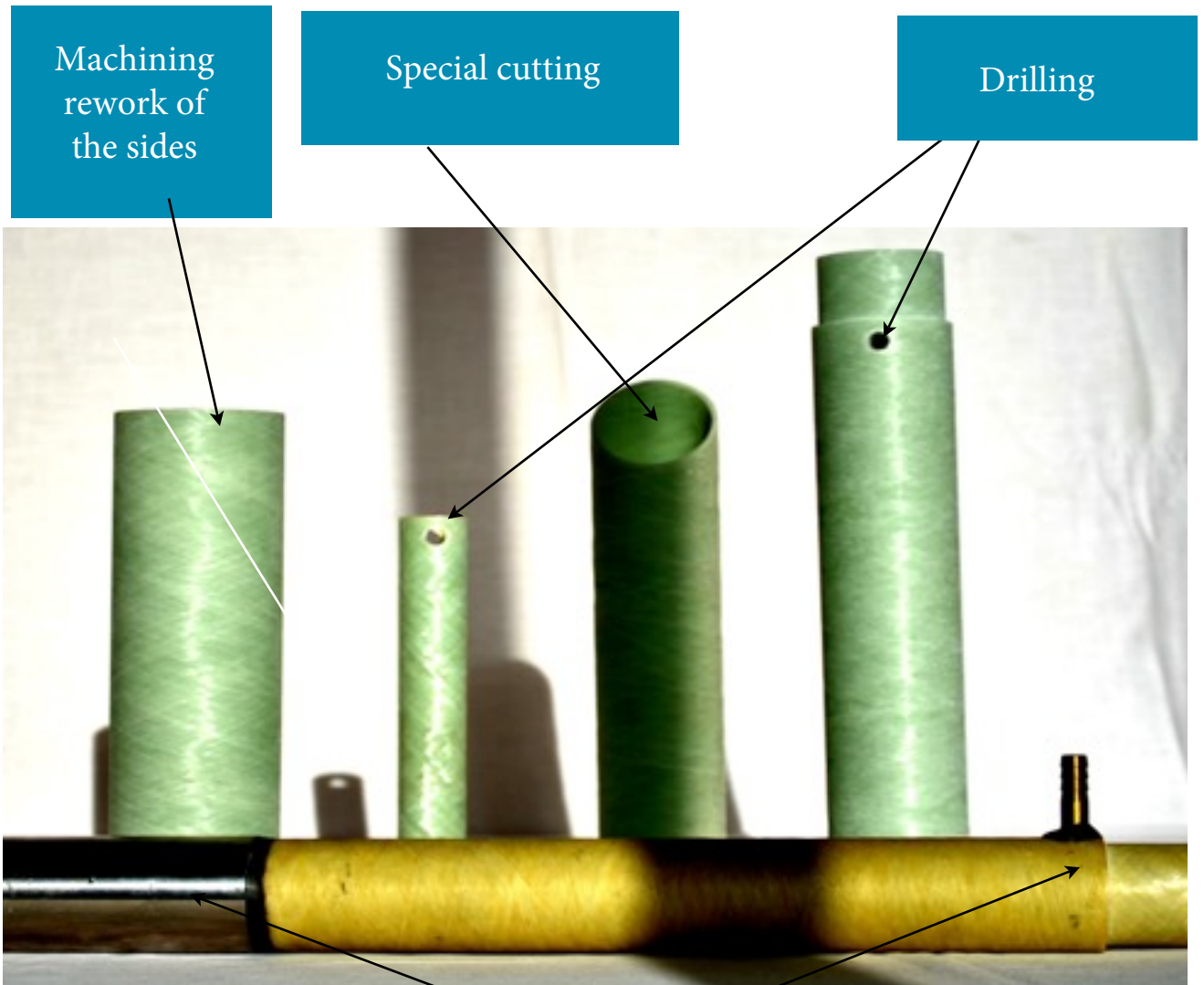
Ovalization : 0,05mm maxi.

Internal roughness : AR between 0,5 and 1,5  $\mu$ m

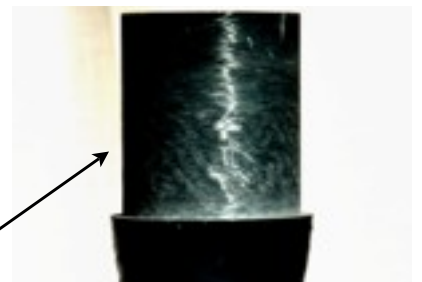
**Explanation :** the fiber is wound-up around a mandrel whose surface finish is extremely smooth (some of our mandrels are chromed-adjusted), depending on the selected mandrel, the internal roughness of the tube makes it possible to seal directly on this surface.



# POSSIBLE COMPLETION OPERATIONS ON A COMPOSITE PART

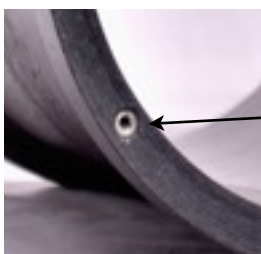
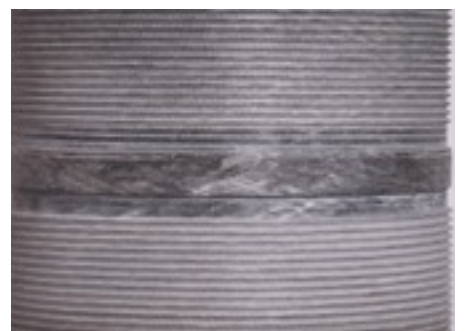


Bonding of an insert or other additional parts



Machining of an internal groove and laying of a stainless-steel ring

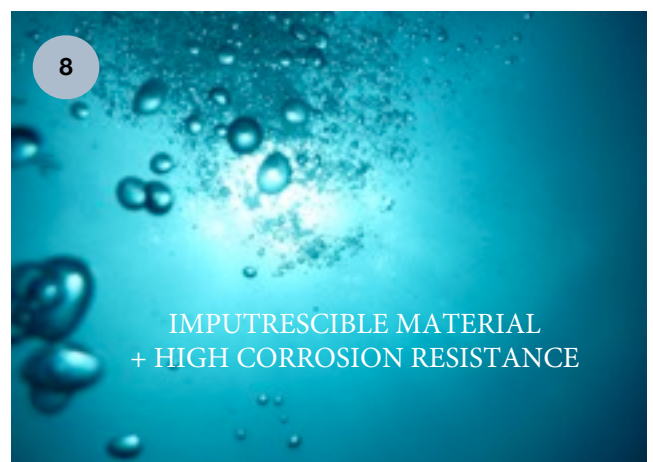
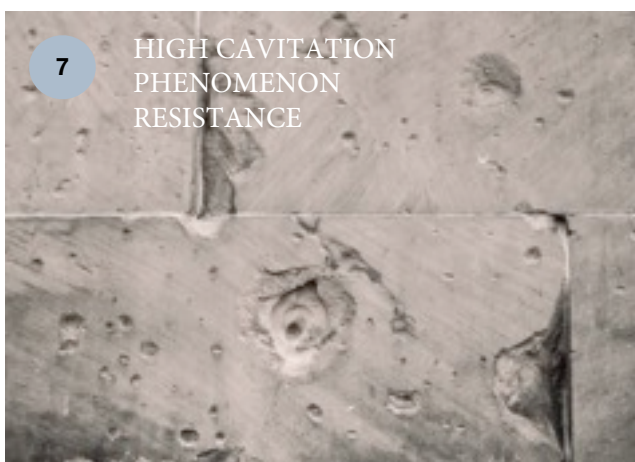
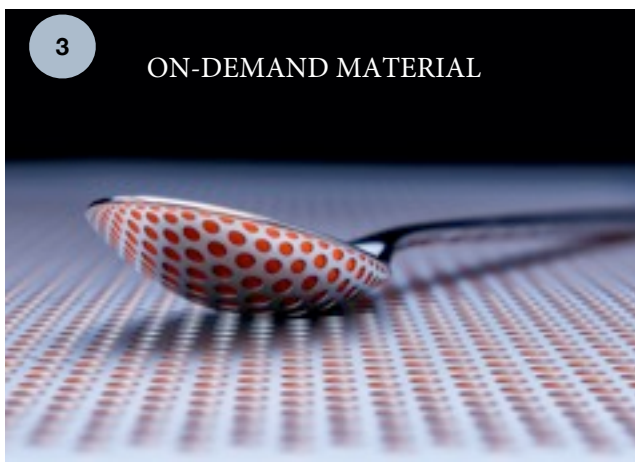
Specific machining



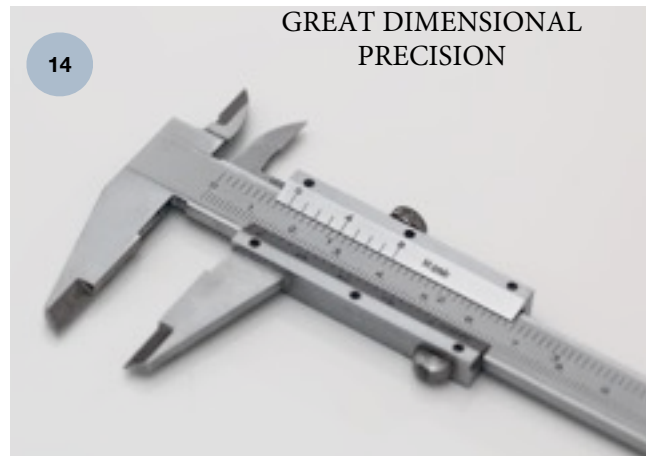
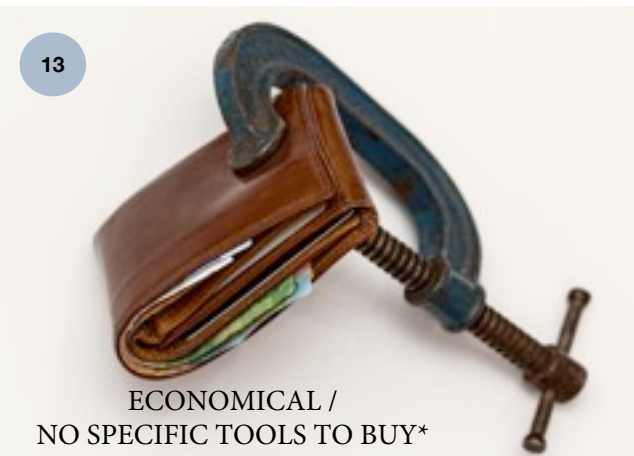
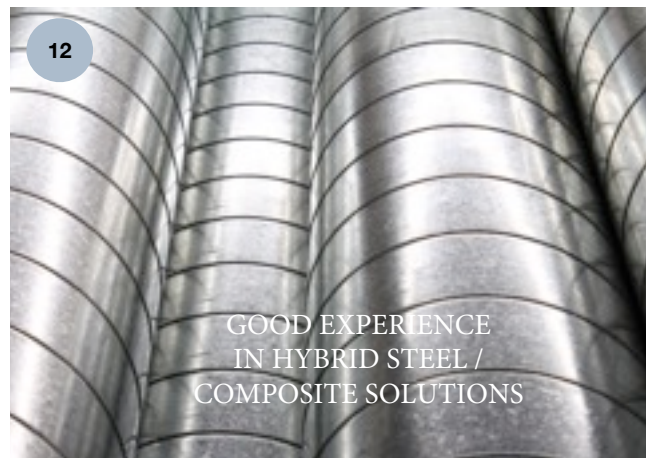
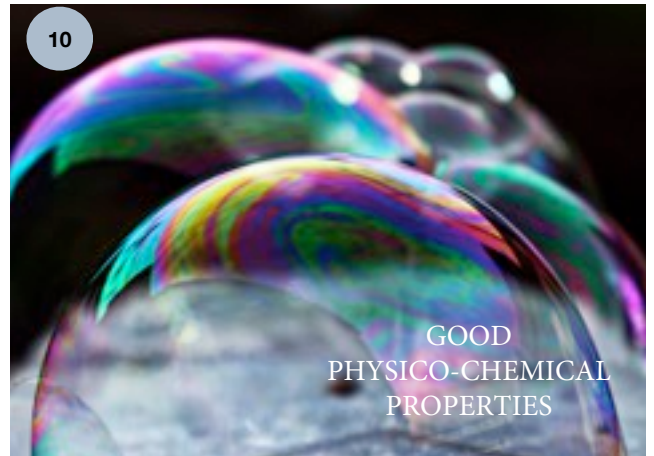
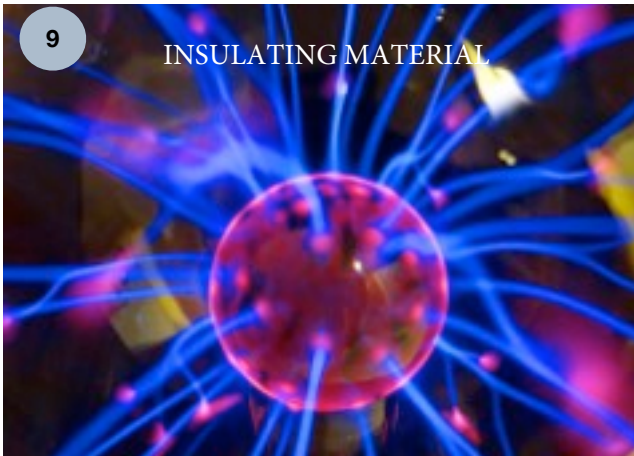
Laying of a helicoid



# COMPARED BENEFITS OF OUR PARTS



# COMPARED BENEFITS OF OUR PARTS







ORDER FROM OUR ONLINE SHOP :

[WWW.EPOXYRESOLUTIONS.COM](http://WWW.EPOXYRESOLUTIONS.COM)

SECURED PAYMENT



DELIVERY THROUGHOUT EUROPE



< 48H

TECHNICAL AND COMMERCIAL  
ASSISTANCE  
from Monday to Friday  
from 8.30 am to 6 pm.



YOU CAN REACH US  
AT THIS NUMBER :

**+33 (0) 2 51 08 86 50**

ASK FOR AUDREY

You can also send us an email at :

[trade@plasticoncomposites.com](mailto:trade@plasticoncomposites.com)

